

CTH 10/20/30

Harici Akım Transformatörü

Tip: CTH

Reçine döküm

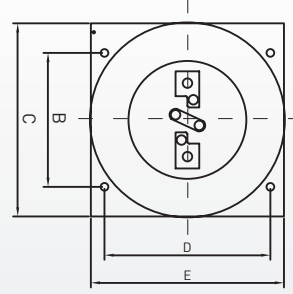
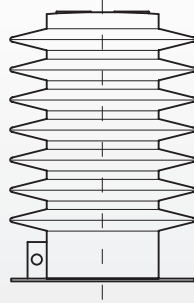
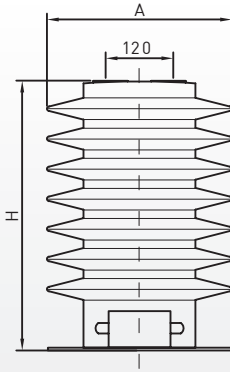
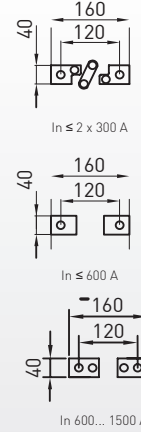
Outdoor Current Transformer

Type: CTH

Cast Resin



Teknik Bilgiler / Technical Data

PRİMER BAĞLANTI
PRIMARY CONNECTION

Tip / Type	A	B	C	D	E	H	Rippes	Crepage Distance/mm
CTH 10	245	320	245	290	205	230	4	460
CTH 20	235	225	275	180	235	350	10	720
CTH 30	335	226	326	280	326	480	7	1100

Ölçüler / Dimensions (mm)

Vida /
LegendSıkma Tork /
Strating torque

Primer terminal / Primary terminal	M12	60-70 Nm
Toprak terminal / Ground terminal	M8	8-10 Nm
Sekonder terminal / Secondary terminal	M6	2 Nm

TİP / TYPE	CTH 10	CTH 20	CTH 30
İşletme gerilimi (mak.) / Operating voltage (max.)	6.3 kV-12 kV	17.5 kV-24 kV	36 kV
Anma izolasyon test gerilimi (1 dk) / Rated power-frequency withstand voltage (1 min.)	20 kV-28 kV	38 kV-50 kV	70 kV
Anma darbe test gerilimi (1,2/50µs) / Rated impulse test voltage (1,2/50µs) full wave	60 kV-75 kV	95 kV-125 kV	170 kV
Anma frekansı / Rated frequency	50 Hz, 60 Hz,		
Primer anma akımı / Rated primary current	10-1500 A		
Primer bağlantıları / Primary reconnection	2x10 A - 2x300 A		
Sekonder anma akımı / Secondary rated current	1A, 5A		
Kısa süreli anma termik akımı Ith (1sn.) / Rated short-time thermal current Ith (1s)	max. 60 kA (max. 1000 x In)		
Anma dinamik akımı Idyn / Rated dynamic current Idyn	2.5 x Ith, max. 120 kA		
Kısa süreli yüklenme (mekanik) / Short-time load (mechanical)	5000 N		
İzolasyon sınıfı / Insulation Class	E		
Çevre ısısı / Ambient temperature	-5.....+40 °C		
Rakım / Altitude	1000 m		
Standart / Standard	IEC, VDE, ANSI		
Ağırlık (yaklaşık) / Weight (approx)	27 kg	28 kg	60 kg

İsteğe bağlı olarak diğer teknik özelliklerde de üretilebilir / Other specifications can be produced on demand.